

representatives, agents and independent contractors accept no liability or responsibility for the death of, injury or harm to any person, or for the loss of or damage to any property or possessions of any person whether arising from negligence or any other cause whatsoever.

invisible  
waste  
powered by greenjobs



Semi-underground bins

[www.greenjobs.co.za](http://www.greenjobs.co.za)

012 111 1100



act  
management  
www.actmanagement.com







ON-SITE ORGANIC WASTE SOLUTIONS

life

HVA  
HYVA SYSTEMS  
HYVA SYSTEMS  
HYVA SYSTEMS  
HYVA SYSTEMS

HVA

WELCOME





**BOMAG**  
FAYAT GROUP

**BOMAG**  
FAYAT GROUP

**BOMAG**  
QUORA LAYAT





**BOMAG**  
FAYAT GROUP

**BOMAG**  
FAYAT GROUP

ON-SITE ORGANIC WASTE SOLUTIONS









SINOWATEK  
**fournier**  
**SLUDGE DEWATERING EQUIPMENT**



**fournier**



















**STT**  
Skip  
Truck  
Traders











ENVIROSERV

T2  
Skip  
Truck  
Tenders

ENVIROSERV  
RESTORATION  
CUSTOMER CARE LINE  
0800 192 783

C3148











**HIAB**

**HIAB**

**JONSERED**

**LOGLIFT**

**MULTILIFT**

**HIAB**

**HIAB**

**JONSERED**

**LOGLIFT**

**MULTILIFT**

**EFFER**

**HIAB**

**HIAB**

**HIAB**

**BUILT TO PERFORM**

**BUILT TO PERFORM**

**BUILT TO PERFORM**

**HIAB**

**HIAB**

**HIAB**

**HIAB**

**HIAB**

**HIAB**

**HIAB**

**HIAB**

**HIAB**

**HIAB**

**LOGLIFT**

**MULTILIFT**

**JONSERED**

**EFFER**











[www.hyva.com](http://www.hyva.com)  
**HYVA**<sup>®</sup>  
[www.hyva.com](http://www.hyva.com)  
**HYVA**

**ISUZU**







BUILT

usimeca

RC - 2221 HD ALPHA

ISUZU

usimeca

ISUZU

ISUZU

UNIVERSITY CENTER

UNIVERSITY OF THE SOUTH ALABAMA





RE



KANU

NO OPEN FLAMES

HYPER

100

7  
CUBE

ISUZU

With you, for the long run

IS





ON-SITE ORGANIC WASTE SOLUTIONS

life

life

life

life

RECYCLE YOUR FOOD WASTE

life



PLAZA  
HYVA

www.hyva.com  
**HYVA**  
www.hyva.com  
**HYVA**  
www.hyva.com  
**HYVA**

**ISUZU**

MC 2017 10 ALPHA

**ISUZU**  
With you for the long run

**ISUZU**  
7 CUBE





**WARNING: DISCLAIMER**  
Persons entering these premises do so entirely at their own risk and Peermont Global City Ltd trading as Emperors Palace, its owners, shareholders, directors, management, employees, representatives, agents and independent contractors accept no liability or responsibility for the death of, injury or harm to any person, or for the loss of or damage to any property or possessions of any person whatsoever arising from negligence or any other cause whatsoever.

Person in white shirt entering building.

Person in yellow shirt entering building.

Person in blue jacket walking past.



CONVENTION CENTRE





**Polyco**  
Making waste work.

Polyco is proud to represent over 800 member organisations who are committed to increasing the recycling of plastic packaging in South Africa.

POLYCO

POLYCO

A

**POLYCO**

**PEOPLE**

South Africa's Leading  
Plastics Producer  
Responsibility  
Organisation (PRO).

Leading in the growth of the plastics recycling  
industry in South Africa.

MINTEK AMD

B

3SMEDIA

ENDSAFE ENGINEERING

PLASTIC GREEN SOLUTIONS

C







DCLM

DCLM

**DCLM**  
Operated by QVEOLIA



**MISSION STATEMENT**

In a world facing resource scarcity and climate change, DCLM provides...  
Our mission is to...  
Fundamental...  
Share their...  
Award...  
Being...  
Multifaceted...



ISO 14001 ISO 45001 ISO 9001

**DCLM**  
Operated by QVEOLIA

**WASTE VALUE CHAIN**

DCLM, operated by Veolia, is...  
The development of long-term...  
partnerships, offering them the...  
of the healthiest, most...  
Industry expertise, and...  
Multifaceted services, leading...  
to the best possible...  
growth, operational...  
efficiency, and...  
sustainability.



**DCLM**  
Operated by QVEOLIA









# POLYCO

# A



## POLYCO

## PEOPLE

South Africa's Largest  
Plastics Producer  
Responsibility  
Organisation (PRO).

7th of the plastics recycling  
industry in South Africa.

polyco  
waste work  
Polyco is proud  
to represent  
over  
800 memb-







# LUHLAZA

Environmental Solutions

+27 (0)53 151 0620  
info@luhlazawm.co.za  
www.luhlazawm.co.za

## PRODUCTS

- Spill mats
- Oil spill kits
- Absorbents
- Oil water separators
- Bioremediation media
- Waste water treatment products
- Environmentally friendly degreaser



# LUHLAZA

Environmental Solutions

BEE Level 2  
Exporting to Africa  
National client base  
Northern Cape based  
Own product manufacturing  
www.luhlazawm.co.za







ROKI WASTE

ROKI WASTE

Oilkol







A-THERMAL



Umohave

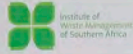
A-THERMAL

EXHIBITOR









Institute of  
Waste Management  
of Southern Africa



Institute of Waste Management of Southern Africa  
**PATRON MEMBERS**





23

PRO LINING

**PRO**Lining  
geosynthetics

"At your service on all your Environmental Solutions"

- Irrigation & Reservoir Dam Lining
- Water Canals
- Aquatic Farming Dams
- Landfills & Cappings
- Evaporation Ponds
- Heap Leach Pads
- Bund Areas

**PRO**Lining  
geosynthetics

"At your service on all your Environmental Solutions"

- Irrigation & Reservoir Dam Lining
- Water Canals
- Aquatic Farming Dams
- Landfills & Cappings
- Evaporation Ponds
- Heap Leach Pads
- Bund Areas





Electric cars don't use oil

**mpact**  
waste management

**mpact**  
waste management







POLYCO

A

MINTEK AMD

B

3SMEDIA

C

BIOSAFE ENGINEERING

D

PANDAE GREEN SOLUTIONS

E

Polyco

NIC  
THE 2017 WATER AND WASTE DEVELOPMENT OUTLOOK

ReSource  
A THERMAL  
zero TO LANDFILL

Panda  
WATER & WASTE  
01  
02  
03  
04  
05

Panda  
WASTE MANAGEMENT SERVICES  
01  
02  
03  
04  
05



**mpact**  
waste management

**mpact**  
waste management

# ZERMA AFRICA

52

**ZERMA AFRICA**



THE HOME OF  
SIZE REDUCTION

**ZERMA**

DESIGN  
COMMITTED

SPECIALISED  
ENGINEERED  
POWERFUL  
RECYCLING  
RUGGED  
CUSTOMER  
FIRST SUPPORT  
SERVICE  
ECONOMICAL  
MACHINERY



ADVANTAGE OF  
STRENGTH BUILT TURNKEY

SIZE REDUCTION

PLASTIC  
GRANULATORS  
SHREDDERS  
SPEED  
GRANULATORS

CRUSHER  
HAMMER  
MILLS  
BLOWERS  
WITH PULVERISERS

TRIAL SINCE OUR 1947

**PULVERISERS**  
CONTAMINATED TRASH  
PARTNERS  
FUTURE  
CHINA  
UK  
ZSS  
ASA  
SHA  
GSL  
TEAM  
OEM  
LATIN  
AMERICA



**ZERMA AFRICA**



[www.zerma.com](http://www.zerma.com)





**mpact**  
waste management

**mpact**  
waste management

**mpact**  
waste management



**mpact**  
waste management

**mpact**  
waste management

**mpact**  
waste management



**HYVA**<sup>®</sup>  
We move your world



WASTE  
MANAGEMENT  
SOLUTIONS

**HYVA**<sup>®</sup>  
We move your world



**HYVA**<sup>®</sup>  
We move your world





ELB EQUIPMENT

# PIKITUP SOC LTD.

55



# RAALEBBORG ENVIRONMENTAL

50



**Raalebborg**  
Environmental Solutions

**INNOVATIVE  
WASTE  
MANAGEMENT  
SOLUTIONS.**



**CONSTRUCTION  
PROGRAMME** Raalebborg  
Environmental Solutions



ELB EQUIPMENT

WORLD'S



100 YEARS





**ELB**  
EQUIPMENT

**ELB**  
EQUIPMENT

**ELB**  
EQUIPMENT

**ELB**  
EQUIPMENT

THE WORLD'S BEST



100  
YEARS

THE WORLD'S BEST



100  
YEARS

**PIONEER PLASTICS**

40

Informational display board for Pioneer Plastics, featuring a grid of product images and descriptive text.

Informational display board for CSIR (The National Cleaner Production Centre, South Africa), featuring various logos and project photos.



50

AGRI

29

CSIR

CSIR

CSIR



**From linear  
to circular**  
Enabling your business to enter the circular economy



**ENVIROSERV**  
WASTE MANAGEMENT  
TODAY'S WASTE IS  
TOMORROW'S RESOURCE

**From linear  
to circular**  
Enabling your business to enter the circular economy





ENGINEERING TO  
SOLVE  
WASTE



**BESPOKE  
ENGINEERING  
SOLUTIONS**



**AKURA**

WASTE SOLUTIONS REFINED TRAMPER STATIONS MATERIAL RECOVERY FACILITIES



Muxmann

sales@akura.co.za

**WASTE CARRIERS PTY LTD** 17/18

WASTE CARRIERS PTY LTD 17/18



WASTE CARRIERS

TALBOT



TALBOT



# From linear to circular

Enabling your business to enter the circular economy



- 1. Reduce
- 2. Reuse
- 3. Recycle
- 4. Recover
- 5. Refuse



**ENVIROSERV**  
WASTE MANAGEMENT  
TODAY'S WASTE IS  
TOMORROW'S RESOURCE

Step into the circular economy

**mpact**

**AKURA**  
WASTE MANAGEMENT  
Nusmann

WASTE CHAINERS PVT LTD



**AKURA**

**BESPOKE  
ENGINEERING  
SOLUTIONS**

**AKURA**

BALING  
SOLUTIONS

REFUSE TRANSFER  
STATIONS

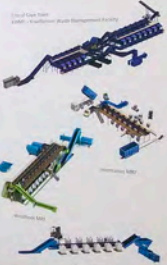
MATERIAL RECOVERY  
FACILITIES

PAAL

AKURA

BRAMMER

**Husmann**  
Umwelt-Technik



WASTE CARRIERS

FACTORY

FACTORY

www.akura.co.za

0.za





23

PRO LINING

23

PRO LINING

**PRO** Lining  
geosynthetics

"At your service on all your Environmental Solutions"

- Irrigation & Reservoir
- Water Canals
- Aquatic Farming
- Landfills & Cap

- Dam Lining
- Evaporation Ponds
- Leach Pads
- Landfills

**PRO** Lining  
geosynthetics

- Irrigation & Reservoir Dam Lining
- Water Canals
- Aquatic Farming Dams
- Evaporation Ponds
- Leach Pads





25/26

ROKI WASTE

24





MPACT PLASTIC CONTAINERS


25/26

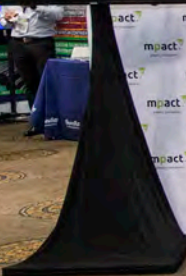
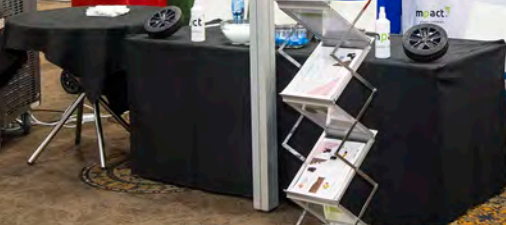
MPACT PLASTIC CONTAINERS

25/26

ROKIM

SYNTHETICS

 **mpact**  
ic containers





# PIONEER PLASTICS

40

**PIONEER PLASTICS**  
Recycle & Litter Bins

**PIONEER PLASTICS**  
www.pioneerplastics.co

**PIONEER PLASTICS**

**PIONEER PLASTICS**

**PIONEER PLASTICS**  
RECYCLE BINS

**PIONEER PLASTICS**  
RECYCLE BINS



ELB EQUIPMENT  
WORLD'S BEST  
10 YEARS

ELB EQUIPMENT  
2020 CPC



**ELB**  
EQUIPMENT

**ELB**  
EQUIPMENT

**ELB**  
EQUIPMENT

**ELB**  
EQUIPMENT

**ELB**  
EQUIPMENT

THE WORLD'S BEST



100  
YEARS

THE WORLD'S BEST



100  
YEARS



50

**R**  
Raalee  
INNOV  
WAS  
MANAG  
SOLUT

PION







# WHAT GOES AROUND COMES AROUND

THE INTERWASTE WASTE MANAGEMENT ESCORTION

ADVANCING OUR VISIONS AHEAD WASTE FUTURE

We serve land and life by challenging the preservation of our environment.

Set in 2014, our business is a testament to the power of innovation. We are a leading provider of waste management solutions, offering a range of services that support our clients' environmental goals. Our commitment to sustainability is at the heart of everything we do.

## LET'S MAKE THE CIRCLE BIGGER



# Interwaste

THE END OF ONE JOURNEY IS THE BEGINNING OF THE NEXT

Interwaste is a leading provider of waste management solutions, offering a range of services that support our clients' environmental goals. Our commitment to sustainability is at the heart of everything we do.







**WHAT GOES AROUND  
COMES AROUND**

**THE INTERWASTE  
WASTE MANAGEMENT  
ECOSYSTEM**

**ADVANCING OUR VISION FOR  
A ZERO WASTE FUTURE**

We serve land and life by championing the preservation of our environment.

Let us help your business flourish by providing solutions - ranging from regulatory compliance to waste management - that support your environmental and social goals.

**LET'S MAKE THE CIRCLE BIGGER**

**INTEGRATED  
WASTE  
MANAGEMENT**

**THE END OF ONE JOURNEY  
IS THE  
BEGINNING  
OF THE NEXT**

**INTERWASTE**

WFO



# ODORCURE

71

Inject

Vapor Striker

Controlled Compressor

TRANS STATION

FOGGING/HYDRAULIC

LANDFILL SITE

Perforate  
Tipping Pads  
Leachate  
Working face  
Face Surface

- Storage Bins
- Plant equipment surfaces
- Building Interiors

ODORCURE  
Specialists

THE END  
BE  
OF





GREENJOBS

72

KASABIAN PROJECTS

invisible  
waste





**A-THERMAL**

**51**

**A-THERMAL**  
ARTIST TECHNOLOGIES (PTY) LTD



[www.athermal.co.za](http://www.athermal.co.za)



A-THERMAL

**mpact**  
waste management





# GRUPO SOMBRA MATSINHE<sup>®</sup> COMERCIO & SERVIÇOS



WE ARE LOOKING  
FOR WASTE BUYERS

## GRUPO SOMBRA MATSINHE<sup>®</sup> COMERCIO & SERVIÇOS

It is a Mozambican company founded in 1991 with a high-mast throughout the country due to its efficiency and punctuality in the provision of highly specialized services. Since 1991 Company is registered in the Mozambican Chamber of Commerce. It leads throughout the country in the supply of tarpaulins, tents, awnings, porches, leather cloth, rugs, carpets, and a wide range of upholstery materials for vehicles, homes and offices.



LET'S WORK TOGETHER FOR A SAFER & HEALTHIER WORLD

### SOLID WASTE MANAGEMENT







### KNOW THE 5 COMPOSTABLE WASTES BELOW

- 1. FOOD WASTE**  
Materials derived from vegetables, fruit and leaves, as well as out of specific processing, such as food left over from restaurants, can be composted. Food waste from other sources, such as fair and farm stalls, can also be composted, and transitional waste can be mixed in the process. Waste is primarily segregated and stored correctly in accordance with environmental law.
- 2. WOOD DERIVATIVES**  
Charcoal dust and sawdust are also compostable materials, as is poultry manure. Items such as offcuts, barks, pieces of wood and pruning of raw or treated trees can also be mixed with organic compounds as long as these woods have not been treated.
- 3. AGRO-INDUSTRIAL WASTE**  
Agro-industrial filtering materials, such as soil residue in composting.
- 4. ANIMAL WASTE**  
Almost any material of animal origin can be used in the production of compost: remains of slaughterhouses (except meat), poultry manure, bone meal, are some of the examples. However, it is important that these substances are stored and transported properly so that they do not compromise the composting process.
- 5. WASTE WATER SLUDGE**  
Waste water sludge is generally rich in organic matter, nitrogen, phosphorus and micronutrients. In composting, they are mixed with other aggregates in order to balance the carbon/nitrogen ratio, a fundamental parameter for the process. In addition to those mentioned, several other organic materials that are part of everyday life can be added to the process. Left overs of raw green vegetables and fruits, dried leaves and flowers, non-greasy paper, grass, sawdust, crushed eggshells, leaves from trees and branches, dried hares and cereals are some of them.

### PACKAGING AND SERVICES

- Recycled materials: polypropylene, wood and cardboard
- Cardboard boxes
- Plastic bags
- Specialized equipment
- Global services
- After sales
- Management
- Marketing

GRUPO **MATSINHE** SERVIÇOS

Company founded in 1998 throughout the country with a focus on efficiency and innovation of highly competitive services in the commerce. It is active in the areas of: awnings, carpets, and materials for



TOGETHER FOR A SAFER ENVIRONMENT FOR OUR GENERATIONS!!!



### SOLID/LIQUID WASTE MANAGEMENT



Mr. Waste is a new service of the Group SOT MATSINHE - Comercio & Serviços EI, which is essentially in the provision of a wide range of specialized solutions for your problems with the management of solid/liquid waste, such as: rental and management of garbage containers, transportation, collection, packaging and certification of the destruction of hazardous and medical waste with a view to improving handling and ensuring the safety of the environment.

### VALUE CHAIN

Recycling is essential to reduce both the volume of discarded in the environment and the consumption of raw material in the industry, and helps preserving resources for the benefit of future generations. This value chain approach to recycling. This involves several aspects, from consumer awareness and sorting infrastructure to expansion of capacity for recycled materials. And investment in partnerships and collaboration are also crucial to creating value for the entire community.

Woman in grey shirt and green skirt, standing at the booth.

Man in orange shirt looking at his phone.



Restrooms







SCIENCES

Restrooms



Instruments

... risk funding schemes to ... with commercial potential

Seed Fund

... to fundable research outputs ... for commercialisation

Technology Development Fund

... to advance technologies along a value chain, from proof of concept technology demonstration

Incubation Support Fund

... to support the commercialisation of technology and business models for market

SEED FUND

TECHNOLOGY INNOVATION AGENCY

Incubation Support Fund

... to support the commercialisation of technology and business models for market

**Green Output Solutions (Pty) Ltd**

"Your reliable partner in sustainable environmental SOLUTIONS"

**Our Services at Glance:**

- Environmental Impact Assessment
- Environmental Management Plans
- Environmental Monitoring and Reporting
- Environmental Remediation
- Environmental Risk Assessment
- Environmental Impact Assessment
- Environmental Management Plans
- Environmental Monitoring and Reporting
- Environmental Remediation
- Environmental Risk Assessment

Event table with a white tablecloth, black skirt, and various promotional items including brochures, a toy truck, and branded cups.



**GIGSA**

Geosynthetics Interest Group of South Africa

**Our Mission**

GIGSA's mission is to promote the understanding and appropriate use of geosynthetic technology throughout Southern Africa.

**GIGSA achieves this through:**

- Educational events
- Disseminating knowledge
- Establishing understanding
- Encouraging standardisation

GIGSA is a non-profit organisation established in 1994.

[www.gigsa.org](http://www.gigsa.org)



# EWASTE AFRICA

37

CABLES BATTERIES SMALL ELECTRONICS PRINTERS AND SCANNERS MOBILE STORAGE PHOTO PRINTING



## eWasteAfrica

YOUR ENVIRONMENTALLY AND LEGALLY COMPLIANT  
ELECTRONIC AND LIGHTING WASTE RECYCLER



TELEVISIONS MONITORS LAPTOPS AND TABLETS



SMALL ELECTRICAL



eWasteAfrica

YOUR ENVIRONMENTALLY  
ETHICAL AND LEGALLY COMPLIANT  
ELECTRONIC AND LIGHTING WASTE  
RECYCLER



OUR SERVICES INCLUDE:  
• Collection & Removal  
• Legal Disposal  
• Recycling

egr...





37

Managing waste for a  
**FRIENDLIER  
ENVIRONMENT**

WasteAfrica

ENVIRONMENTALLY  
AND LEGALLY  
ELECTRONIC  
WASTE  
CYCLER



**the WastegrOup**  
MANAGING WASTE FOR A FRIENDLIER ENVIRONMENT



**the WastegrOup**  
MANAGING WASTE FOR A FRIENDLIER ENVIRONMENT



**THE WASTE CITY**

- Multi-Waste Industry
- Green Development
- Off-the-grid Development
- Circular Economy Model
- First of its kind in South Africa
- Sustainable Community development projects
- Investment opportunities

Alternative Energy

Green & Organic Related In

Recycling & Waste Identification I

The Waste Group has always  
realised the necessity of  
**LANDFILL SITES**



TEM

Solutions for  
Environmental  
on Sector



63

**AQUATAN**  
LINING SYSTEMS - THE TOTAL SOLUTION

TECHNICAL  
SINCE

**AQUATAN**  
LINING SYSTEMS - THE TOTAL SOLUTION

ct  
ction of a pyrolyser of RDF  
unicipal Solid Waste  
ns: A landfill site in Chile  
ject will be capable of  
g up to 1000kg/hour of RDF  
expected calorific value  
/kg.

AL

**IDS**  
**STE**

can Village

APAK

BRAND CENTER





RECLITE SA

65

ENVITEC

Your complete  
**WASTE & R**  
solution



RECLITE

INCREASE YOUR  
GREEN EARNINGS



RECLITE

ECONOMICAL  
ETHICAL  
ECOLOGICAL







28 GUNDLÉ GEOSYNTHETICS

27

GUNDLÉ GEOSYNTHETICS

**Gundlé®**  
**GEOSYNTHETICS**

[www.gundlego.co.za](http://www.gundlego.co.za)

MANUFACTURERS, DISTRIBUTORS, CONTRACTORS, HOPE, GEOMEMBRANE, LIME, AND OTHER GEOSYNTHETICS ACROSS THE AFRICAN CONTINENT.

SOME APPLICATIONS: TAILING DAMS, EVAPORATION PONDS, RE...

LEACH PADS, GAPPINGS, URGENT AREAS, PO'S, RAW WATER POND L...

LEACH PADS, GAPPINGS, URGENT AREAS, PO'S, RAW WATER POND L...



Restrooms



# FLOOR PLAN



## OUTDOOR



## EXHIBITORS LIST

Company Name	Booth Number	Company Name	Booth Number
ABC Company	101	XYZ Company	201
DEF Company	102	UVW Company	202
GHI Company	103	RST Company	203
JKL Company	104	OPQ Company	204
MNO Company	105	XYZ Company	205
PQR Company	106	UVW Company	206
STU Company	107	RST Company	207
VWX Company	108	OPQ Company	208
YZA Company	109	XYZ Company	209
BCD Company	110	UVW Company	210
EFG Company	111	RST Company	211
HIJ Company	112	OPQ Company	212
KLM Company	113	XYZ Company	213
NOP Company	114	UVW Company	214
QRS Company	115	RST Company	215
TUV Company	116	OPQ Company	216
WXY Company	117	XYZ Company	217
ZAB Company	118	UVW Company	218
ACD Company	119	RST Company	219
EFG Company	120	OPQ Company	220



WELCOME TO WasteCon 2022

SPONSORS DIAMOND

GOLD SPONSOR

"TRIPLE TRACK"

"DOUBLE TRACK"

"SINGLE TRACK"

CONFERENCE

Institute of Waste Management of Southern Africa



C

# BIOSAFE ENGINEERING

D

# PANDAE GREEN



Commercial Medical Waste Treatment Products  
The Best Solution to providing safety and best operational costs.



Desk area with a laptop displaying a video, a blue water bottle, and other items.



WASTE IN A BOX  
Go. Mail. Exit!

Waste Stream Management Solution

- 01 YOUR STAFF MANAGE & SORT
- 02 CLICK TO COLLECT
- 03 TRACK & RECORD
- 04 ANALYZE DATA
- 05 ENSURE COMPLIANCE



POLYCO

A

MINTI

**Polyco**  
 Making waste work

Polyco is proud to represent **over 800 member** organisations who are committed to increasing the recycling of plastic packaging in

[www.polyco.co.za](http://www.polyco.co.za)



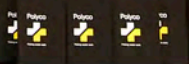
**POLYCO**

South Africa's Largest  
 Plastics Producer  
 Responsibility  
 Organisation (RPO).

Investing in the growth and collection industry  
 Plastics recycling Africa.



**Polyco**





# From linear to circular

Enabling your business to enter the circular economy



Assembling waste to benefit



Household waste services



Waste recycling and on-site waste management



Waste treatment and disposal



Waste management services



From linear to circular



- Assembling waste to benefit
- Household waste services
- Waste recycling and on-site waste management
- Waste treatment and disposal
- Waste management services







38/39

EAST LONDON IDZ

east london idz  
BUSINESS REGENERATION

- ECO-FRIENDLY
- WATER TESTING
- AIR / NOISE MONITORING
- LIGHT INDUSTRY

AN ENVIRONMENTALLY FRIENDLY INDUSTRIAL DEVELOPMENT ZONE



east london idz

# RISE TO REFUSE

## THE STATUS QUO ON WASTE



REWRITING THE STORY OF PLASTIC WASTE



cloniker

REWRITING THE STORY OF PLASTIC WASTE

YOU ET COM A





37

Managing waste for a  
**FRIENDLIER  
ENVIRONMENT**

Africa  
ENTALLY  
EGALLY  
CTRONIC  
WASTE  
ER



the  
**Wastegroup**  
MANAGING WASTE FOR A FRIENDLIER ENVIRONMENT

OUR SERVICES



THE WASTE PATH

The Waste Group has always  
realised the necessity of  
**LANDFILL SITES**



TEMA SA

RECLITE SA





PIKITUP SOC LTD.

55

RAA





♿ Restrooms ↓

**TUFFLEX**  
Plastic Products (Pty) Ltd  
Innovative Plastic Recycling  
www.tufflex.co.za

Recycling of Post-Industrial & Post-Consumer PP/PE

**TUFFLEX**  
Plastic Products (Pty) Ltd  
Innovative Plastic Recycling  
www.tufflex.co.za

Recycling of Post-Industrial & Post-Consumer PP/PE

Producers of Quality Plastic Recycled Timber



Restrooms ↓

Member







**ROKI WASTE**

24



**AKURA**

REFUSE TRANSFER STATIONS

MATERIAL RECOVERY FACILITIES

**Husmann**

WASTE SOLUTIONS

Restrooms

Woman in white shirt and black dress talking at the ROKI WASTE booth.

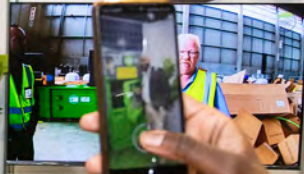
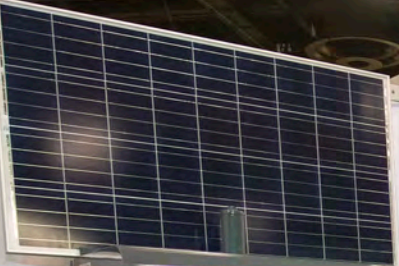
Man in black jacket and khaki pants standing at the ROKI WASTE booth.

Man in blue shirt standing at the AKURA booth.

Man in blue shirt and woman in white shirt talking at the AKURA booth.

Woman in white shirt and cap talking at the AKURA booth.







MPACT PLASTIC CONTAINERS

25/26

MPACT PLASTIC CONTAINERS

25/26

ROKIWASTE





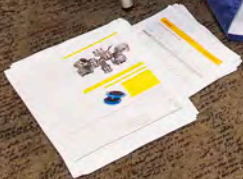


DISTRIBUTORS & INSTALLERS OF  
NON-WOVEN GEOTEXTILE  
ANTHESTICS LINERS  
IN THE AFRICAN CONTINENT

APPLICATIONS: TAILING DAMS, LANDFILL  
LIQUORATION PONDS, RESERVOIR



Gundle  
GEOSYNTHETICS





EQUIPMENT

**PIONEER PLASTICS**  
Anything's Possible

**PIONEER**  
Recycle & Litter Bins

[www.pioneerplastics.co.za](http://www.pioneerplastics.co.za)

**PIONEER PLASTICS**  
EST 1982  
Anything's Possible

**LOCKERS**

**BINS & CONTAINERS**

**HYDROPONICS**

**TRUCKING**

**3ETTES & BUDYS**

**PEDAL BINS**

**CUSTOM MOULDING**

**PIONEER OUTDOOR**

**DRUMS & TANKS**

**WATER TANKS**

[www.pioneerplastics.co.za](http://www.pioneerplastics.co.za)

**PIONEER PLASTICS**  
WASTE MANAGEMENT SOLUTIONS

INDUSTRIAL

COMMERCIAL

RESIDENTIAL

[www.pioneerplastics.co.za](http://www.pioneerplastics.co.za)







# AKS Lining Systems (Pty) Ltd



## Geoliner



AKS Lining Systems

comprehensive in-house laboratory  
monitors the quality of  
products and resins.

### PROVIDING EXCELLENT LONG-LASTING CONTAINMENT FOR WASTE LANDFILLS



AKS Lining Systems (Pty) Ltd

HIGH QUALITY MANUFACTURER OF HDPE LATEX COATED  
geomembrane & concrete protection liner

## COUNCIL OF SCIENTIFIC AND INDUSTRIAL RESEARCH (CSIR)

### 20 NCPC

20 years of Industrial Efficiency  
in South Africa  
[www.ncpc.co.za](http://www.ncpc.co.za)



CSIR  
Leading the way through innovation



37

**eWasteAfrica**

**YOUR ENVIRONMENTALLY ETHICAL AND LEGALLY COMPLIANT ELECTRONIC AND LIGHTING WASTE RECYCLER**

CABLES  
 BATTERIES  
 SMALL ELECTRICAL EQUIPMENT  
 TELECOMMUNICATIONS EQUIPMENT  
 WASTE STORAGE SOLUTIONS  
 LIGHTING STORAGE SOLUTIONS

ISO 9001  
 ISO 14001

TEMPERATURE EXCHANGE EQUIPMENT  
 CRT MONITORS  
 LIGHTING  
 SCREEN AND MONITOR  
 SOLAR PAGES  
 LARGE ELECTRICAL EQUIPMENT

**the WasteGroup**  
MANAGING WASTE FOR A FINDER'S ENVIRONMENT

**OUR SERVICES**

Recycling & Monitoring  
 Commercial & Industrial Waste Removal  
 Mobile, Residential & Construction Waste Removal

**Our Fleet & Equipment**



**WASTE CITY**

The Waste Group has always realised the necessity of **LANDFILL SITES**

• Public Waste Industry  
 • Green Development  
 • On-site Waste Treatment  
 • Circular Economy  
 • Area of Research  
 • Resource Recovery

Alternative Energy  
 Green & Organic Related Industries  
 Recycling & Waste Solutions Industries

**WasteGroup**



TEMA SA

**RECYCLE**





AGRIMAN WASTE BENEFICIATION

28

15



LEAKAGE CONTROL  
CLEAN AND  
EMPLOYER FRIENDLY

EASY HANDLING  
EFFICIENT LOGISTICS

AGRIMAN

AGRIMAN WASTE BENEFICIATION

TRANSPORT  
STANDING  
SERVATION

Orkel

Staff member 1: A man in a black polo shirt and blue jeans, wearing a lanyard with a badge.

Staff member 2: A woman in a black polo shirt and beige trousers, wearing a lanyard with a badge, leaning on a large white roll.

Staff member 3: A woman in a dark blue polo shirt and dark trousers, wearing a lanyard with a badge, leaning on a large white roll.

Staff member 4: A man in a black polo shirt and blue jeans, wearing a lanyard with a badge.



CITY OF EKURHULENI

15

PRI BIOSCIENCES

H30 Business 4

Orbital







City of Ekurhuleni

City of Ekurhuleni

City of Ekurhuleni

City of Ekurhuleni

City of Ekurhuleni

City of Ekurhuleni

City of Ekurhuleni

City of Ekurhuleni

City of Ekurhuleni

City of Ekurhuleni

City of Ekurhuleni

City of Ekurhuleni

ec  
BIZU

ANTISEPTIC

GLYCEROL

Diesel

USED COOKING OIL

HOUSEHOLD COOKING OIL

CRUDE OIL

FEED CANS

SUNFLOWER

EKURHULENI

Revitalising Gauteng's Industrial Engine





**REWRITING THE STORY OF PLASTIC WASTE**

2021  
DIGITAL SCALE-UP

**OUR PROCESS**



**clariter**  
A Clean Slate

**WE ARE PLASTIC TO PRODUCTS**

- SOVENTRA®**  
Perfect for ink, coating, industrial, household & dry cleaning, adhesives, sealants, and many more.
- DI-12P®**  
Useful for silicon sealants, oil for personal care & cosmetics carrier for fragrances, lubricants, and others.
- CLARITY AX®**  
Ideal for sealants, plastics, wood coatings, leather care, petroleum jelly, bathroom care, and more.

**WE ARE NOT:**  
PLASTIC TO PLASTIC  
PLASTIC TO FUEL  
PLASTIC TO ENERGY.





32

CAMBI

CAMBI

CAMBI



Thermal hydrolysis - key for a flexible biosolids strategy



- Available products with 100% water recovery & maximum performance parameters. Up to 95% organic availability.
- Compostable delivery models.
- Available for all wastewater treatment plants.

Divert your ORGANIC



The CAMBI Thermal Hydrolysis Process (THP) is a leading technology for the treatment of a broad range of organic waste streams from both municipal and industrial sources. It produces high quality products while recovering 100% of the water.

CAMBI





# ESKOM ROTEK INDUSTRIES

 Eskom  
RoteK Industries

 Eskom  
RoteK Industries

 Eskom  
RoteK Industries

 Eskom  
RoteK Industries

 Eskom  
RoteK Industries

 Eskom  
RoteK Industries

 Eskom  
RoteK Industries

## LOGISTICS SERVICES

Logistics Services offers road transport, material handling, warehousing, and other services to move electricity generation, transmission, distribution and building equipment to and from sites. We have the largest multi-axle fleet in the Southern Hemisphere. Services include:



 Eskom  
RoteK Industries

 Eskom  
RoteK Industries

 Eskom  
RoteK Industries

 Eskom  
RoteK Industries

 Eskom  
RoteK Industries

 Eskom  
RoteK Industries

 Eskom  
RoteK Industries





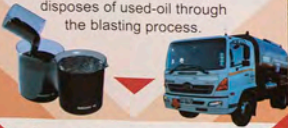
Do you need  
used-oil collected?



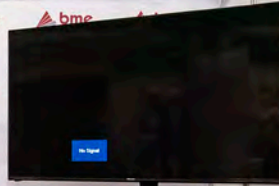
We created a used-oil  
collection network.

The used-oil we collect is utilized in  
the manufacturing of our emulsions.

This recycles and safely  
disposes of used-oil through  
the blasting process.



[bme.co.za/used-oil](http://bme.co.za/used-oil)



Your blasting  
partner!

[bme.co.za](http://bme.co.za)

Scan the QR to  
connect with  
us online!





# ALL HANDS ON WASTE

61

 **ALL HANDS ON WASTE**  
Reduce • Reuse • Recycle  
Duncan Village



  
**ALL HANDS ON WASTE**  
DUNCAN VILLAGE  
REDUCE • REUSE • RECYCLE

 078 889 4196  
 info@duncanvillagebbc.co.za  
 www.duncanvillagebbc.co.za

#allhandsonwaste



**AQUA**  
LIVING SYSTEMS - THE  
TECHNICAL  
SINCE 1





63

ics Proj

ia removal,  
rion landfill  
East New  
1) landfill  
m/day  
removed  
group  
CO



**AQUATAN**  
LINING SYSTEMS - THE TOTAL SOLUTION

**TECHNICAL LEADERS  
SINCE 1966**



A

R

Re

Re

Re

**AQUATAN**  
LINING SYSTEMS - THE TOTAL SOLUTION





TEMA SA

58

COVER UP  
SYSTEM

Temporary and final terms fill  
and odour covers for landfill  
Remediation covers.  
Custom made stockpile covers



Innovative Solutions for  
the Environmental &  
Construction Sectors



astegrop

WASTE FOR A FRIENDLIER ENVIRONMENT

THE WASTE

RECLITE SA

RECUTE

INCREASE YOUR  
GREEN EARNINGS



Booth 65

RECLITE SA

65

RECLITE



INCREASE YOUR GREEN EARNINGS



RECLITE

RECYCLING THROUGH INNOVATION

RECLITE



ECONOMICAL  
ETHICAL  
ECOLOGICAL





58

# ABSORBETECH FOR AFRICA

57

J8

**Oil-20 Oil and Hydrocarbon Converter**

CYBERCHEM ENVIRONMENTALS

Oil-20 is a highly effective, non-toxic, and biodegradable absorbent designed for the rapid removal of oil and hydrocarbon spills. It is suitable for use in a wide range of environments, including industrial, marine, and agricultural settings. The product is easy to apply and provides a long-lasting barrier against further contamination.

Key features include:

- Highly effective absorption of oil and hydrocarbons.
- Non-toxic and biodegradable.
- Easy to apply and use.
- Long-lasting barrier against further contamination.



**K2-BI Hydrocarbon Remediator**

CYBERCHEM ENVIRONMENTALS

K2-BI is a highly effective, non-toxic, and biodegradable remediation agent designed for the rapid removal of oil and hydrocarbon spills. It is suitable for use in a wide range of environments, including industrial, marine, and agricultural settings. The product is easy to apply and provides a long-lasting barrier against further contamination.

Key features include:

- Highly effective absorption of oil and hydrocarbons.
- Non-toxic and biodegradable.
- Easy to apply and use.
- Long-lasting barrier against further contamination.







Your complete  
**WASTE & RECYCLING**  
solution

**SPEAK TO US TODAY**  
and see how we can help you

Healthcare

Heavy Industries

Retail & Hospitality

FMCG

& Gas

Automotive

[averda.co.za](http://averda.co.za)

OUR **WORLD**  
WITHOUT WASTE

#WeAreAverda



RECRUTE SA



# J&J FABRICATIONS





71

OC



WHAT GOES AROUND  
THE BETTER WASTE MANAGEMENT

LET'S MAKE THE CIRCLE BIGGER

RATED

Sécché INTERWASTE  
THE END OF ONE JOURNEY IS THE BEGINNING OF THE NEXT





SRS GLOBAL TRADING

2



**GREASE  
RECYCLING**

**GREASE  
RECYCLING**

SRS GLOBAL TRADING

**GREASE RECYCLING**

GET IN TOUCH WITH US;  
Tel: +27 11 056 6744

FOR MORE INFO  
info@srs-gt.com  
Tel: +27 11 056 6744

VISIT US ON:  
www.srs-gt.com

VISIT US ON:  
17 President Street,  
Cannonville  
1400  
South Africa

FOR MORE INFO  
info@srs-gt.com  
Tel: +27 11 056 6744

VISIT US ON:  
www.srs-gt.com

VISIT US ON:  
17 President Street,  
Cannonville  
1400  
South Africa

TEL: +27 11 056 6744

TEL: +27 11 056 6744



27

TALBOT

16

TALBOT  
The Art of Water

TALBOT  
The Art of Water



TALBOT  
The Art of Water







17/18

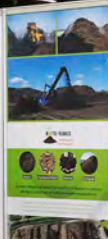
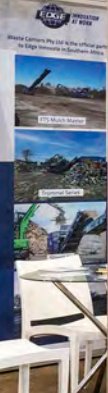
17/18

WASTE CARRIERS PTY LTD

WASTE CARRIERS PTY LTD

WASTE CARRIERS PTY LTD

Lining  
environmental  
Environmental Solutions



Restrooms





**ELB**  
EQUIPMENT

**ELB**  
EQUIPMENT

**ELB**  
EQUIPMENT

**ELB**  
EQUIPMENT



THE WORLD'S BEST

THE WORLD'S BEST



100  
YEARS





# RAALEBBORG ENVIRONMENTAL

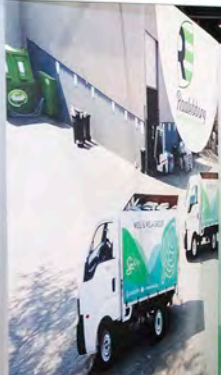
50



Raalebborg  
Environmental Solutions

CONSTRUCTION PROGRAMME  
Raalebborg  
Environmental Solutions

MENTORING PROGRAMME



WIKI UP  
ANALYSING  
LONDON

ELB  
EQUIPMENT

WORLD'S

RS



mpack  
waste management

mpack  
waste management

ZERMA AFRICA

52

ZERMA  
AFRICA



THE ONE ZERO...  
FROM THE ZERO...  
ZERO...  
THE ONE ZERO...  
THE ONE ZERO...



DESIGN  
COMMITTED  
ADVANTAGE  
STRENGTH  
SPECIALISED  
ENGINEERED  
POWERFUL  
RECYCLING  
RUGGED  
CUSTOMER  
SUPPORT  
SERVICE

ADVANTAGE  
STRENGTH  
SPECIALISED  
ENGINEERED  
POWERFUL  
RECYCLING  
RUGGED  
CUSTOMER  
SUPPORT  
SERVICE

SIZE PLASTIC  
REDUCTION  
SHREDDERS  
GRANULATORS  
PULVERISERS  
SPECIALISED MACHINES

PULVERISERS  
CONTRACTS TEST  
PARTNERS  
FUTURE  
SUSTAINABLE  
CHINA  
UK

ZERMA  
AFRICA





# K1 RECYCLING

67/68

67 / 68

**K1 RECYCLING**  
OUR RECYCLING PROCESS

1. Collection from water purifiers  
2. B2B Collection  
3. Sorting & Recycling  
4. Final Sorting  
5. Washing Plant  
6. Drying  
7. Extrusion  
8. Final Product  
9. The K1 Team

Foundation aims to **Educate & Research** to drive mindset change in our communities in the next 30 years.

**K1 Foundation**  
Train, Educate & Research

Advocate for sustainable practices in the environmental sector.

(+27) 71 125 1023  
www.k1foundation.co.za  
info@k1foundation.co.za

**K1 Foundation**  
Train, Educate & Research

Our mission is to drive mindset change in our communities in the next 30 years.

(+27) 71 125 1023  
www.k1foundation.co.za  
info@k1foundation.co.za





7

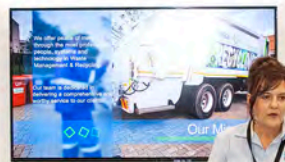
Managing waste for a  
**FRIENDLIER  
ENVIRONMENT**

**the Wastegroup**  
OUR SERVICES

- Commercial & Industrial Waste Removal
- Medical, Hazardous & Biohazardous Waste Removal
- Domestic Waste Removal

**ELB**  
EQUIPMENT

**the Wastegroup**  
MANAGING WASTE FOR A FRIENDLIER ENVIRONMENT



**THE WASTE CITY**

- Multi Waste Industry
- Green Development
- Off-the-grid Development
- Circular Economy Model
- First of its kind in South Africa
- Sustainable Community development projects
- Investment opportunities

Alternative Energy

The Waste Group has always realised the necessity of  
**LANDFILL SITES**







36/47

JOBE GROUP

36/47

JOBE GROUP

48

ROTEK INDUSTRIES

Eskom  
Rotek Industries

Eskom  
Rotek Industries

Eskom  
Rotek Industries

Eskom  
Rotek Industries

Eskom  
Rotek Industries

Eskom  
Rotek Industries

EXIT

JOBE GROUP

JOBE GROUP

JOBE GROUP

JOBE GROUP

JOBE GROUP





ON-SITE ORGANIC WASTE SOLUTIONS

life

life

life

GreenPowerLife  
Composting Solutions

Composting Solutions  
GreenPowerLife





**HYVA**  
THE HYDRAULIC GROUP

**HYVA**

ISUZU

7 CUBE

500

N-SPARE  
PWT

**HIRB**











37



**the WastegrOup**

**OUR SERVICES**

- Recycling & Reuse
- Commercial & Industrial Waste Removal
- Medical, Hazardous & Biohazardous Removal

**the WastegrOup**

MANAGING WASTE FOR A FRIENDLIER ENVIRONMENT

**THE WASTE CITY**

- Multi Waste Industry
- Green Development
- Off-the-shelf Development Model
- Circular Economy

The Waste Group has always realised the necessity of **LANDFILL SITES**

teAfrica

MENTALLY LEGALLY ELECTRONIC G WASTE ER

ISO 1001 ISO 14001

TEMA 9







































MOVES THE WORLD

HYVA

HYVA THE ORIGINAL WASTE SOLUTION

ISUZU

ISUZU

ISUZU T-CUBE





PERMONT  
HETCOURT  
SUITE

ISUZU

ISUZU

ISUZU  
th you, for th

ISUZU  
7 CUBE

ISUZU  
7 CUBE









POWERSTAR  
www.everstarindustries.co.za



WASTE SOLUTIONS  
www.wastesolutions.co.za





www.everstarindustries.co.za

Tel: 012 940 1750









# Carbon

The food and organic waste is thoroughly mixed with carbon (woodchips and/or sawdust) and by using the patented bio filter process, the composting process starts.



# Food Waste after 4 weeks in the BiobiN

Partially composted material after 4 weeks. There is no raw food waste lying around which could attract pests and rodents and will deter humans from trying to salvage some food out of the food waste.



# Results after 3-4 months

When the BiobiN is emptied out into the composter windows, micro-organisms further break down the organic matter, and as this happens, the exothermic reaction heats up and the composting process continues. It takes







# LUHLAZA

Environmental Solutions

+27 (0)53 151 0620  
info@luhlazawm.co.za  
www.luhlazawm.co.za

## PRODUCTS

- Spill mats
- Oil spill kits
- Absorbents
- Oil water separators
- Bioremediation media
- Waste water treatment products
- Environmentally friendly degreasers

# LUHLAZA

Environmental Solutions

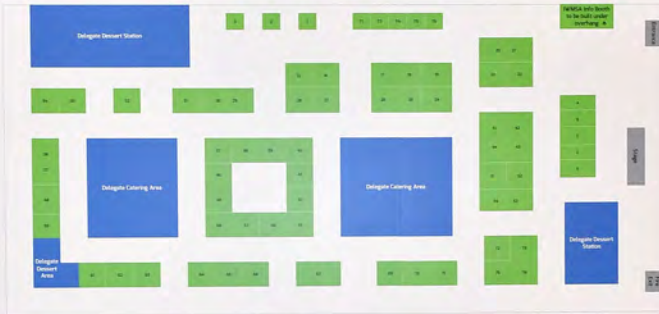
BEE Level 2  
Exporting to Africa  
National client base  
Northern Cape based  
Own product manufacturing  
[www.luhlazawm.co.za](http://www.luhlazawm.co.za)

A man is sitting at a table covered with a black cloth, talking on a mobile phone. On the table are several stacks of blue water bottles, a laptop, and some papers. In front of the table are several bags and containers of LUHLAZA products, including a large green bag with the LUHLAZA logo, a grey bag labeled 'ZORB', a grey jerrycan, and a grey bag labeled 'EO FX'.





# FLOOR PLAN



## OUTDOOR



## EXHIBITORS LIST

Exhibitor Name	Booth No.	Exhibitor Name	Booth No.	Exhibitor Name	Booth No.
Abu Dhabi	10	Abu Dhabi	10	Abu Dhabi	10
Abu Dhabi	11	Abu Dhabi	11	Abu Dhabi	11
Abu Dhabi	12	Abu Dhabi	12	Abu Dhabi	12
Abu Dhabi	13	Abu Dhabi	13	Abu Dhabi	13
Abu Dhabi	14	Abu Dhabi	14	Abu Dhabi	14
Abu Dhabi	15	Abu Dhabi	15	Abu Dhabi	15
Abu Dhabi	16	Abu Dhabi	16	Abu Dhabi	16
Abu Dhabi	17	Abu Dhabi	17	Abu Dhabi	17
Abu Dhabi	18	Abu Dhabi	18	Abu Dhabi	18
Abu Dhabi	19	Abu Dhabi	19	Abu Dhabi	19
Abu Dhabi	20	Abu Dhabi	20	Abu Dhabi	20
Abu Dhabi	21	Abu Dhabi	21	Abu Dhabi	21
Abu Dhabi	22	Abu Dhabi	22	Abu Dhabi	22
Abu Dhabi	23	Abu Dhabi	23	Abu Dhabi	23
Abu Dhabi	24	Abu Dhabi	24	Abu Dhabi	24
Abu Dhabi	25	Abu Dhabi	25	Abu Dhabi	25
Abu Dhabi	26	Abu Dhabi	26	Abu Dhabi	26
Abu Dhabi	27	Abu Dhabi	27	Abu Dhabi	27
Abu Dhabi	28	Abu Dhabi	28	Abu Dhabi	28
Abu Dhabi	29	Abu Dhabi	29	Abu Dhabi	29
Abu Dhabi	30	Abu Dhabi	30	Abu Dhabi	30
Abu Dhabi	31	Abu Dhabi	31	Abu Dhabi	31
Abu Dhabi	32	Abu Dhabi	32	Abu Dhabi	32
Abu Dhabi	33	Abu Dhabi	33	Abu Dhabi	33
Abu Dhabi	34	Abu Dhabi	34	Abu Dhabi	34
Abu Dhabi	35	Abu Dhabi	35	Abu Dhabi	35
Abu Dhabi	36	Abu Dhabi	36	Abu Dhabi	36
Abu Dhabi	37	Abu Dhabi	37	Abu Dhabi	37
Abu Dhabi	38	Abu Dhabi	38	Abu Dhabi	38
Abu Dhabi	39	Abu Dhabi	39	Abu Dhabi	39
Abu Dhabi	40	Abu Dhabi	40	Abu Dhabi	40
Abu Dhabi	41	Abu Dhabi	41	Abu Dhabi	41
Abu Dhabi	42	Abu Dhabi	42	Abu Dhabi	42
Abu Dhabi	43	Abu Dhabi	43	Abu Dhabi	43
Abu Dhabi	44	Abu Dhabi	44	Abu Dhabi	44
Abu Dhabi	45	Abu Dhabi	45	Abu Dhabi	45
Abu Dhabi	46	Abu Dhabi	46	Abu Dhabi	46
Abu Dhabi	47	Abu Dhabi	47	Abu Dhabi	47
Abu Dhabi	48	Abu Dhabi	48	Abu Dhabi	48
Abu Dhabi	49	Abu Dhabi	49	Abu Dhabi	49
Abu Dhabi	50	Abu Dhabi	50	Abu Dhabi	50
Abu Dhabi	51	Abu Dhabi	51	Abu Dhabi	51
Abu Dhabi	52	Abu Dhabi	52	Abu Dhabi	52
Abu Dhabi	53	Abu Dhabi	53	Abu Dhabi	53
Abu Dhabi	54	Abu Dhabi	54	Abu Dhabi	54
Abu Dhabi	55	Abu Dhabi	55	Abu Dhabi	55
Abu Dhabi	56	Abu Dhabi	56	Abu Dhabi	56
Abu Dhabi	57	Abu Dhabi	57	Abu Dhabi	57
Abu Dhabi	58	Abu Dhabi	58	Abu Dhabi	58
Abu Dhabi	59	Abu Dhabi	59	Abu Dhabi	59
Abu Dhabi	60	Abu Dhabi	60	Abu Dhabi	60
Abu Dhabi	61	Abu Dhabi	61	Abu Dhabi	61
Abu Dhabi	62	Abu Dhabi	62	Abu Dhabi	62
Abu Dhabi	63	Abu Dhabi	63	Abu Dhabi	63
Abu Dhabi	64	Abu Dhabi	64	Abu Dhabi	64
Abu Dhabi	65	Abu Dhabi	65	Abu Dhabi	65
Abu Dhabi	66	Abu Dhabi	66	Abu Dhabi	66
Abu Dhabi	67	Abu Dhabi	67	Abu Dhabi	67
Abu Dhabi	68	Abu Dhabi	68	Abu Dhabi	68
Abu Dhabi	69	Abu Dhabi	69	Abu Dhabi	69
Abu Dhabi	70	Abu Dhabi	70	Abu Dhabi	70
Abu Dhabi	71	Abu Dhabi	71	Abu Dhabi	71
Abu Dhabi	72	Abu Dhabi	72	Abu Dhabi	72
Abu Dhabi	73	Abu Dhabi	73	Abu Dhabi	73
Abu Dhabi	74	Abu Dhabi	74	Abu Dhabi	74
Abu Dhabi	75	Abu Dhabi	75	Abu Dhabi	75
Abu Dhabi	76	Abu Dhabi	76	Abu Dhabi	76
Abu Dhabi	77	Abu Dhabi	77	Abu Dhabi	77
Abu Dhabi	78	Abu Dhabi	78	Abu Dhabi	78
Abu Dhabi	79	Abu Dhabi	79	Abu Dhabi	79
Abu Dhabi	80	Abu Dhabi	80	Abu Dhabi	80
Abu Dhabi	81	Abu Dhabi	81	Abu Dhabi	81
Abu Dhabi	82	Abu Dhabi	82	Abu Dhabi	82
Abu Dhabi	83	Abu Dhabi	83	Abu Dhabi	83
Abu Dhabi	84	Abu Dhabi	84	Abu Dhabi	84
Abu Dhabi	85	Abu Dhabi	85	Abu Dhabi	85
Abu Dhabi	86	Abu Dhabi	86	Abu Dhabi	86
Abu Dhabi	87	Abu Dhabi	87	Abu Dhabi	87
Abu Dhabi	88	Abu Dhabi	88	Abu Dhabi	88
Abu Dhabi	89	Abu Dhabi	89	Abu Dhabi	89
Abu Dhabi	90	Abu Dhabi	90	Abu Dhabi	90
Abu Dhabi	91	Abu Dhabi	91	Abu Dhabi	91
Abu Dhabi	92	Abu Dhabi	92	Abu Dhabi	92
Abu Dhabi	93	Abu Dhabi	93	Abu Dhabi	93
Abu Dhabi	94	Abu Dhabi	94	Abu Dhabi	94
Abu Dhabi	95	Abu Dhabi	95	Abu Dhabi	95
Abu Dhabi	96	Abu Dhabi	96	Abu Dhabi	96
Abu Dhabi	97	Abu Dhabi	97	Abu Dhabi	97
Abu Dhabi	98	Abu Dhabi	98	Abu Dhabi	98
Abu Dhabi	99	Abu Dhabi	99	Abu Dhabi	99
Abu Dhabi	100	Abu Dhabi	100	Abu Dhabi	100



WELCOME TO  
**WasteCon 2022**

SPONSORS  
DIAMOND  
**KEMACH**  
SOUTHERN **SOMAC**

GOLD  
INTERWASTE **TRANSTECH**

"TRIPLE TRACK"  
LUHLAZA **SASOL**

"DOUBLE TRACK"  
**DCLM** **ALBERILA** **W&W** **SA**

envitech **JPC**

"SINGLE TRACK"  
**DCLM** **ALBERILA** **W&W** **SA**

CONFERENCE  
EnviroServ **Jones & Wiegner**





# From linear to circular

Enabling your business to enter the circular economy



- 1. Reducing waste to landfill
- 2. Maximizing resource efficiency
- 3. Reusing, recycling and recovering
- 4. Reusing products and components
- 5. Reusing materials



**ENVIROSERV**

WASTE MANAGEMENT

TODAY'S WASTE IS TOMORROW'S RESOURCE

**AKURA**

SALING SOLUTIONS

**AKURA**

REFUSE TREATMENT STATIONS

BESPOKE  
ENGINEERING  
SOLUTIONS



**Musmann**

Step into the circular economy



**mpact**  
waste management

73/74/75

**KASABIAN PROJECTS**

73/74/75

**KASABIAN PROJECTS**

73/74/75

**KASABIAN PROJECTS**

A vertical banner for Kasabian Projects. At the top is the Kasabian Projects logo, which consists of a green stylized 'K' followed by the text 'KASABIAN PROJECTS' and 'waste management' below it. Below the logo, there is a section titled 'WASTE MANAGEMENT' with a list of services: 'Solid underground bins', 'Waste transfer stations', and 'Waste-to-energy plants'. The banner features a photograph of a person in a field. At the bottom, there is a small graphic of a recycling symbol and the text 'Waste management solutions'.













ENGINEERING

D

PANDAE GREEN SOLUTIONS

E

meact meact meact



Pandae Green Solutions display board featuring a grid of images and text, with two men standing nearby.





Electric cars don't use oil

**mpact**  
waste management

**mpact**  
waste management



SAKELIGA





**mpact**  
waste management

**mpact**  
waste management

**mpact**  
waste management



Our circular business model goes beyond us and our clients.

**mpact**  
waste management

**mpact**  
waste management

**mpact**  
waste management

**mpact**  
waste management

ROKI

BIOSAFE ENGINEERING

PAN